

**PERMANENT,  
RELIABLE,  
& FASTEST**  
Method for  
Lug-to-Cable  
Connections

**ERICO® can provide the ideal grounding and bonding products for wireless telecom applications.**

- One CADWELD® mold for 7 lug sizes - minimizes inventory of molds
- Multiple molds are replaced with ONE versatile mold that utilizes inexpensive conductor sleeves\*
- No multiple tools or dies required as with crimped connections
- Superior lug-to-cable connection quality - Welded lug connection will not loosen or corrode
- Ideal for the grounded and bonding requirements of the codes & standards: NEC, CEC, TIA, BICSI

\*exception: no sleeve required for #2 concentric cable



See reverse side for part numbers and sizing information.

## ORDERING INFORMATION

CADWELD® Telecom Mold No. is **GLPCC001TC** and includes B399B Mini EZ change handle clamp and T320 flint igniter. CADWELD weld metal size **#25** works for all 7 lug sizes.

ONE HOLE UPTURN LUG						
Part Number	Thickness A	Width B	Length C	Centers D	E	Bolt Size F
B921CC14	.125	.63	.875	N/A	.375	1/4"
B921CC38	.125	.63	.875	N/A	.375	3/8"

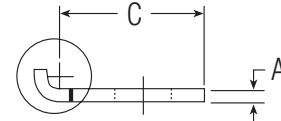
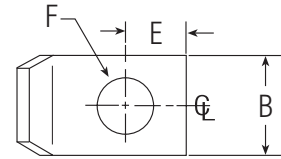
Note: All CADWELD lugs are electrotin plated copper alloy.

TWO HOLE UPTURN LUG						
Part Number	Thickness A	Width B	Length C	Centers D	E	Bolt Size F
B922CC14A	.125	.63	1.88	.625	.375	1/4"
B922CC14B	.125	.63	1.88	.75	.375	1/4"
B922CC14C	.125	.63	1.88	1	.375	1/4"
B922CC38B	.125	.63	1.88	.75	.375	3/8"
B922CC38C	.125	.63	1.88	1	.375	3/8"

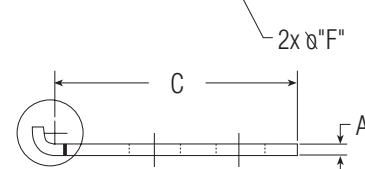
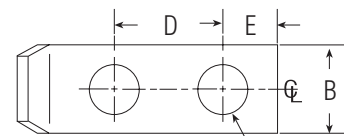
Note: All CADWELD lugs are electrotin plated copper alloy.

SLEEVE REQUIREMENTS			
Conductor Size(s)		Sleeve No.	Qty per Package
Concentric	Solid		
#6	#5	B112	25
#4 & #5	#3 & #4	B1331V	25
N/A	#2	S429F1N12	25
#2	N/A	No Sleeve Required	N/A

### One Hole Lug

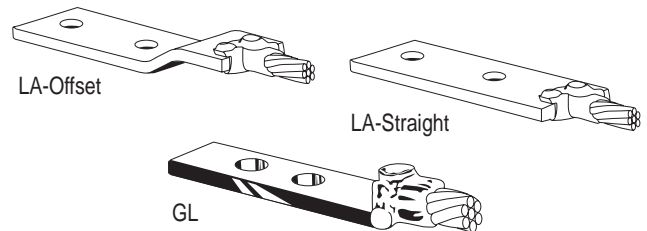


### Two Hole Lug

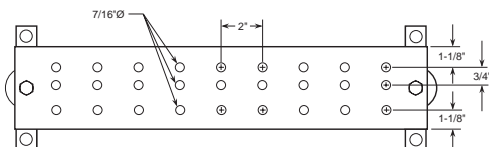


## OTHER RELATED PRODUCTS

TELEPHONE LUGS (Two Holes for 3/8" Bolts on 1" Centers)				
Lug Size	Type GL	Type LA		Maximum Conductor
		Straight	Offset	
1/8" x 1"	B123CE03	B103CEOL003	B103CEOL003	3/0 AWG
3/16"	B123DE03	B123DE001	B103DEOL	250 kcmil
1/4" x 1"	B123EE03	B103EE002	B103EEOL003	350 kcmil
1/4" x 1 1/2"	B123EG03	B103EG002	B103EGOL001	500 kcmil
3/8" x 2"	N/A	B103GH003	B103GHOL004	1000 kcmil



For Type GL lugs, use Type GL molds as listed in Catalog A-1A.  
For Type LA lugs, use Type LA molds as listed in Catalog A-1A.



Ground Bar P/N B544A027 (1/4 x 4 x 20")

### Notes:

- All assemblies include insulators and mounting brackets.
- Insulators are 2700 volts indoor rating.
- Also available without insulators.
- Also available with cable pigtailed welded to bar. Specify cable size, length and insulation type.
- Other bar sizes, hole sizes, spacing, etc. available on special order.

### GROUND BARS for Single Point Grounding

Many ground bars sizes are in stock and available. Contact ERICO® for stock sizes or custom requirements. Shown at left is a typical bar size.

Distributed By: